

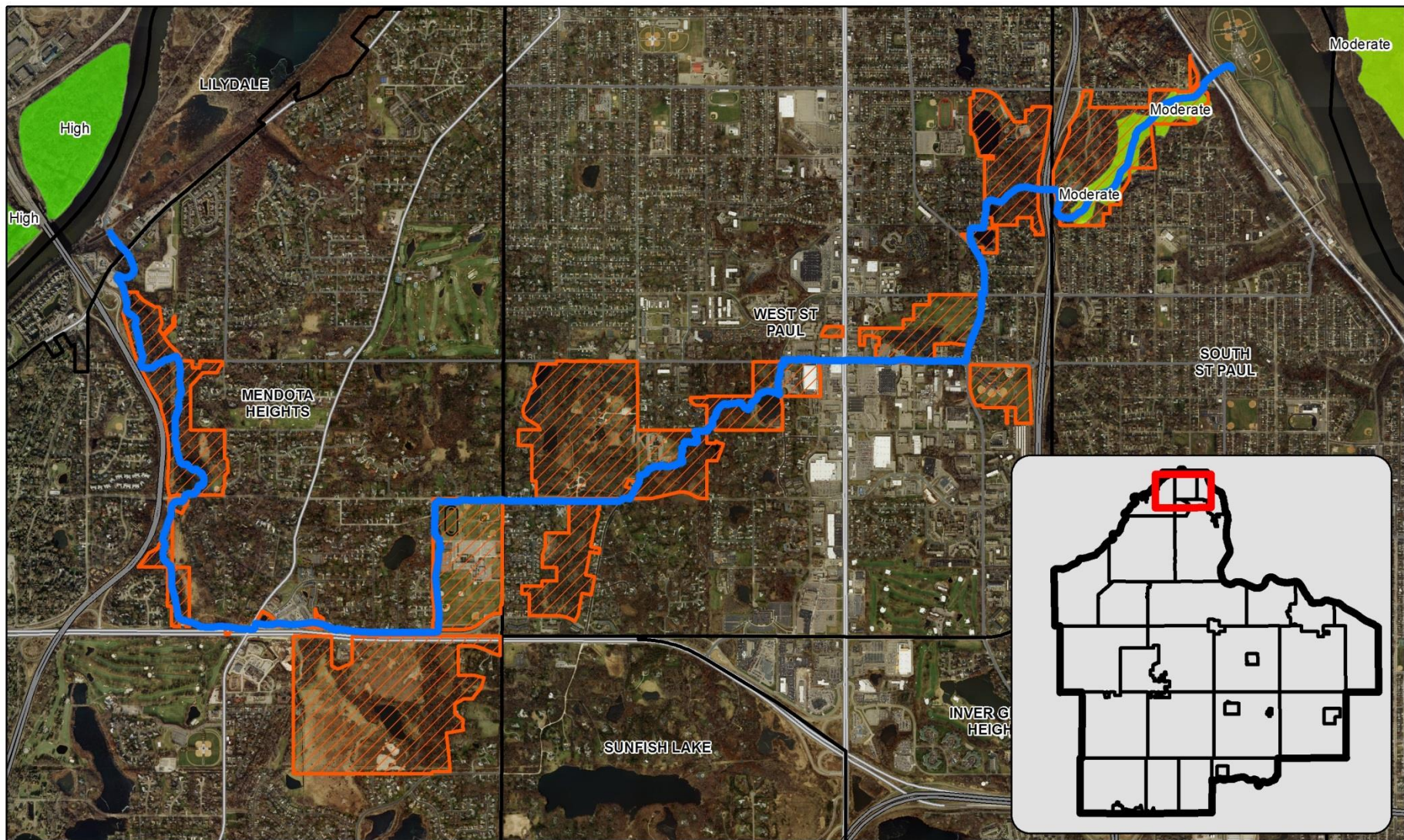
A small yellow and black bird is perched on a reed in the foreground. The background is a blurred river with greenish water. The text is overlaid on the top half of the image.

# River to River Greenway Natural Resources Management Plan Phase I - Findings

Christian Klatt  
Natural Resources Specialist

**Planning Commission Meeting – October 24<sup>th</sup> 2019**

# Figure 1 - Location of Greenway and Biodiversity Corridors



## MCBS Sites of Biodiversity Significance

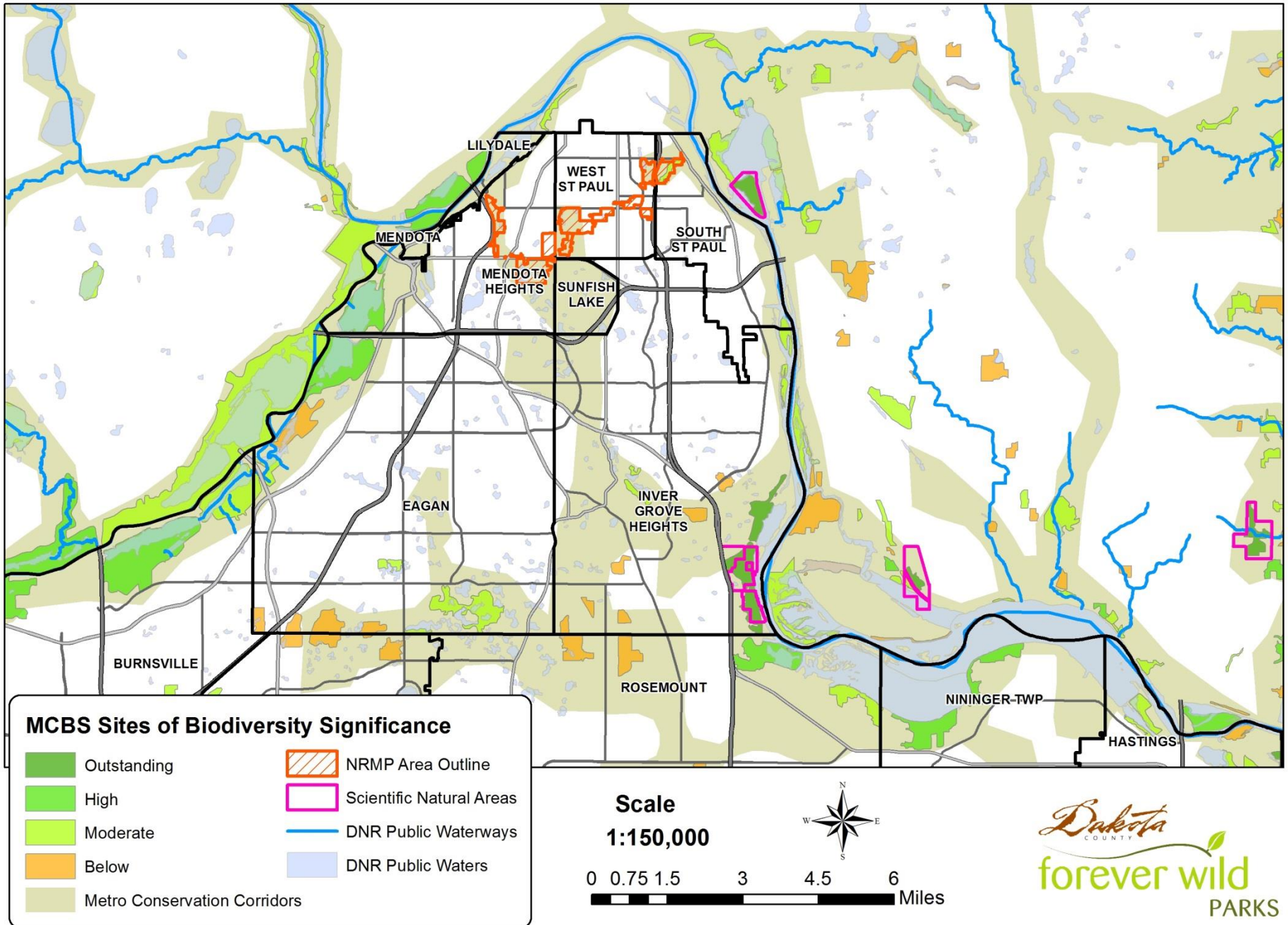
- High
- Moderate
- RiverToRiverGreenway
- NRMP Area Outline

Scale  
1:30,000

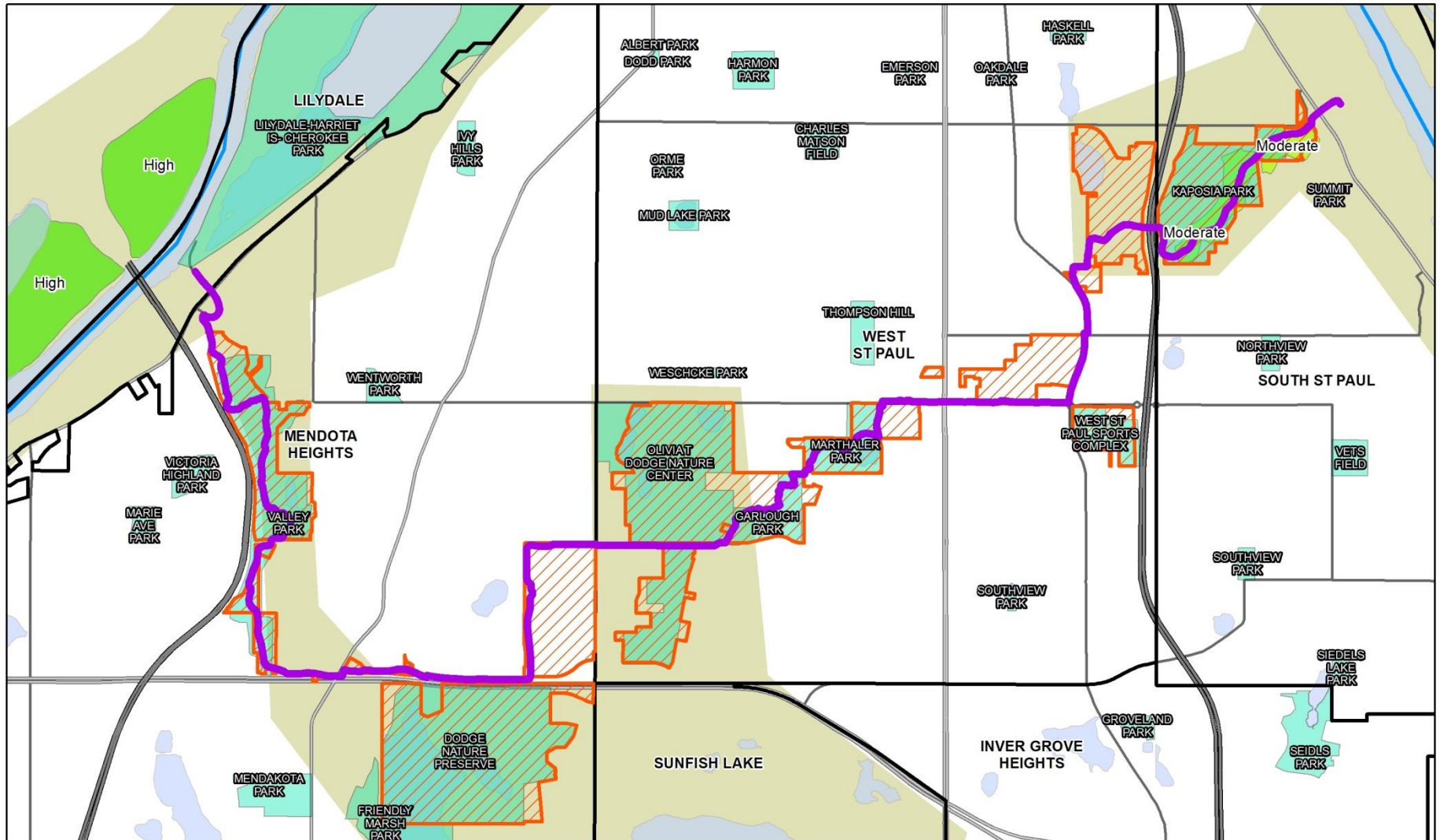


0 0.25 0.5 1 1.5 2 Miles

# Figure 2 - Sub-Regional Landscape Context

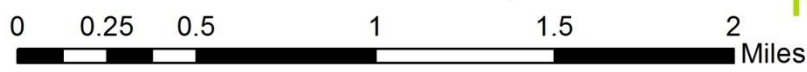


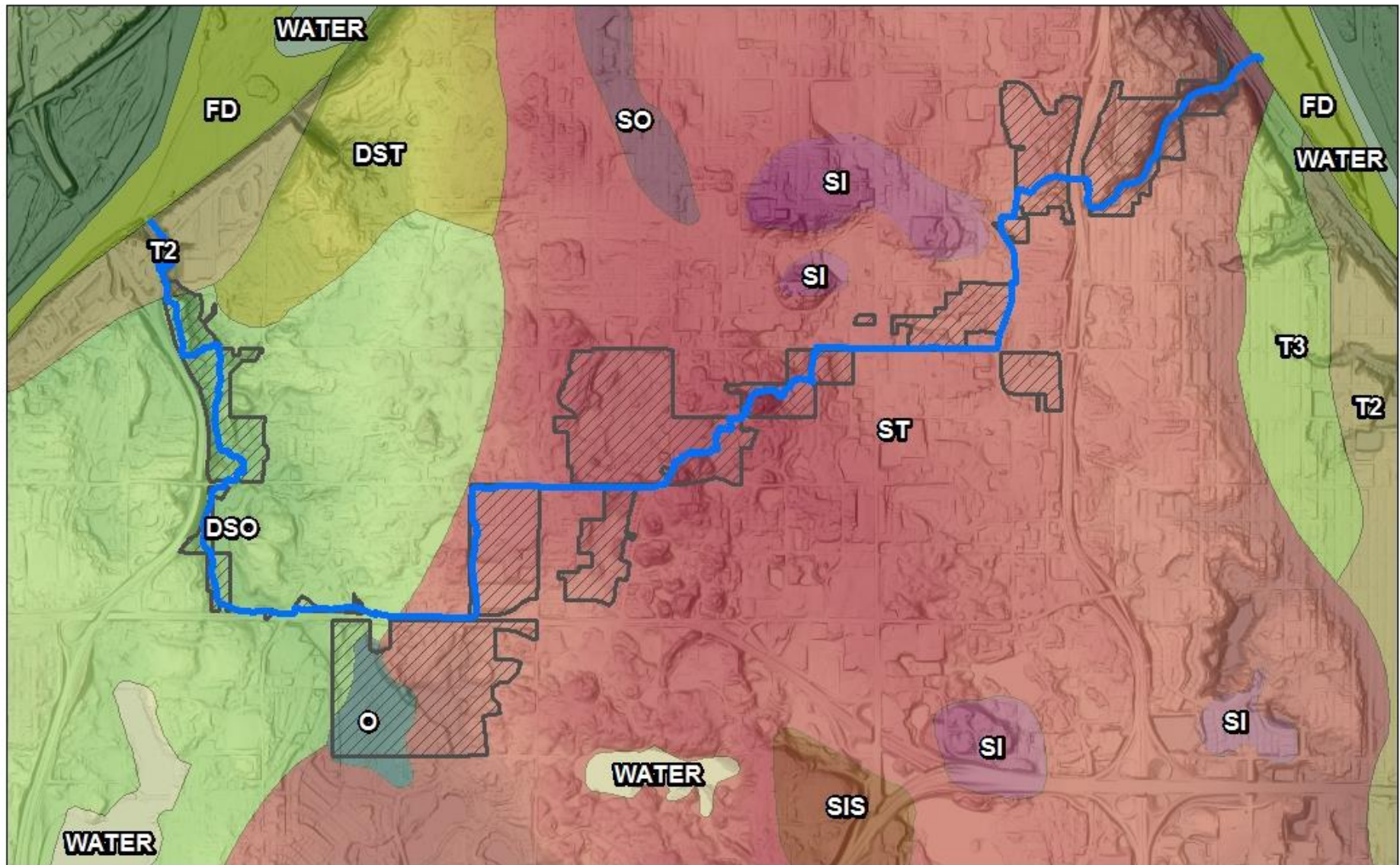
# Figure 3 - Local Landscape Context



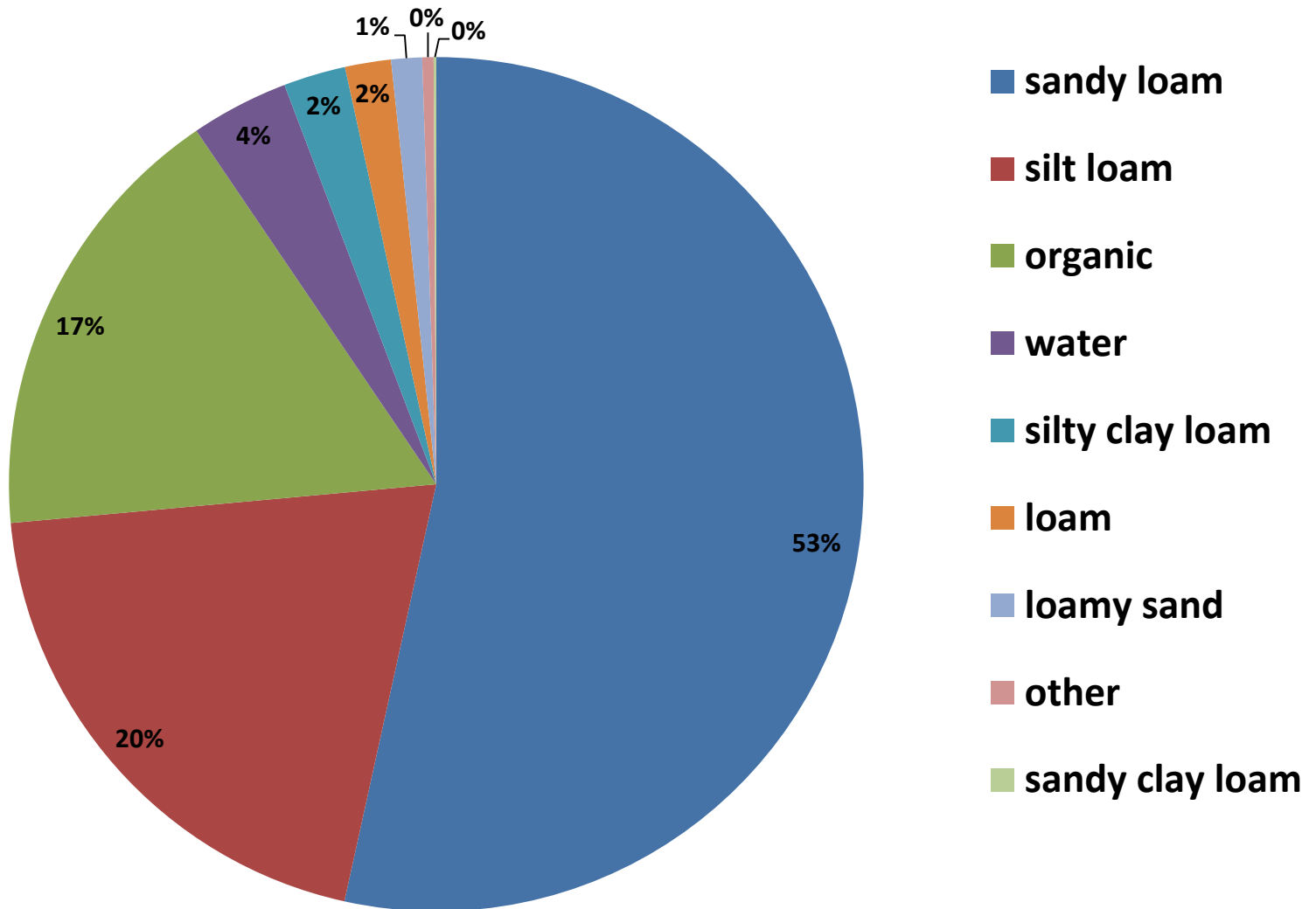
	Outstanding		NRMP Area Outline
	High		Metro Conservation Corridors
	Moderate		DNR Public Waterways
	Below		DNR Public Waters
	City Parks		River to River Greenway

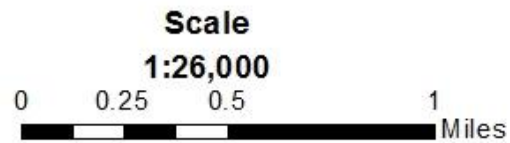
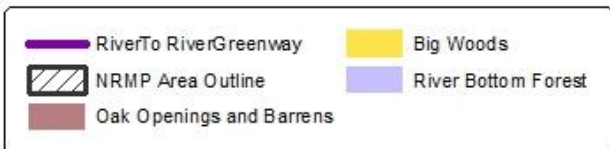
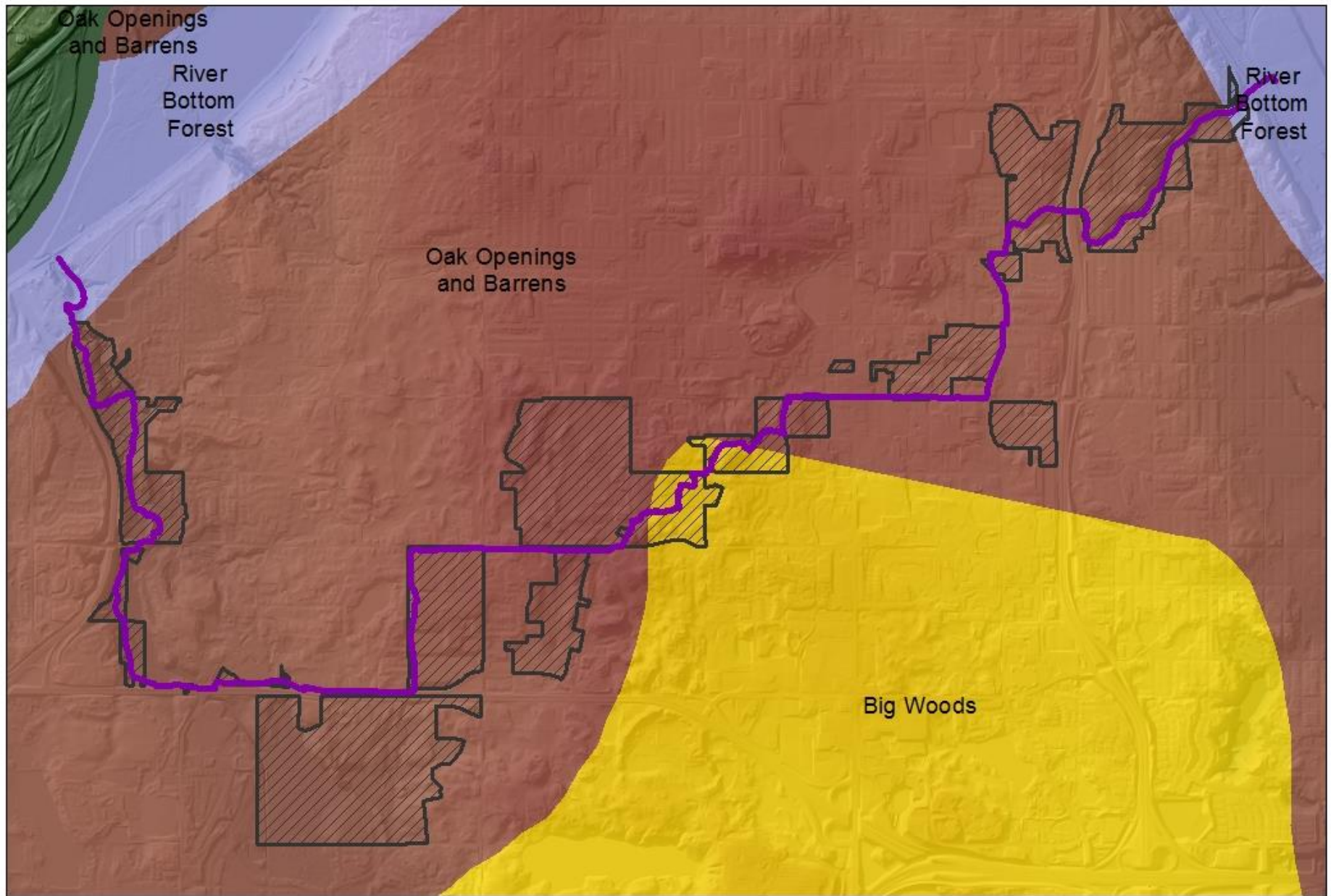
Scale  
1:30,000



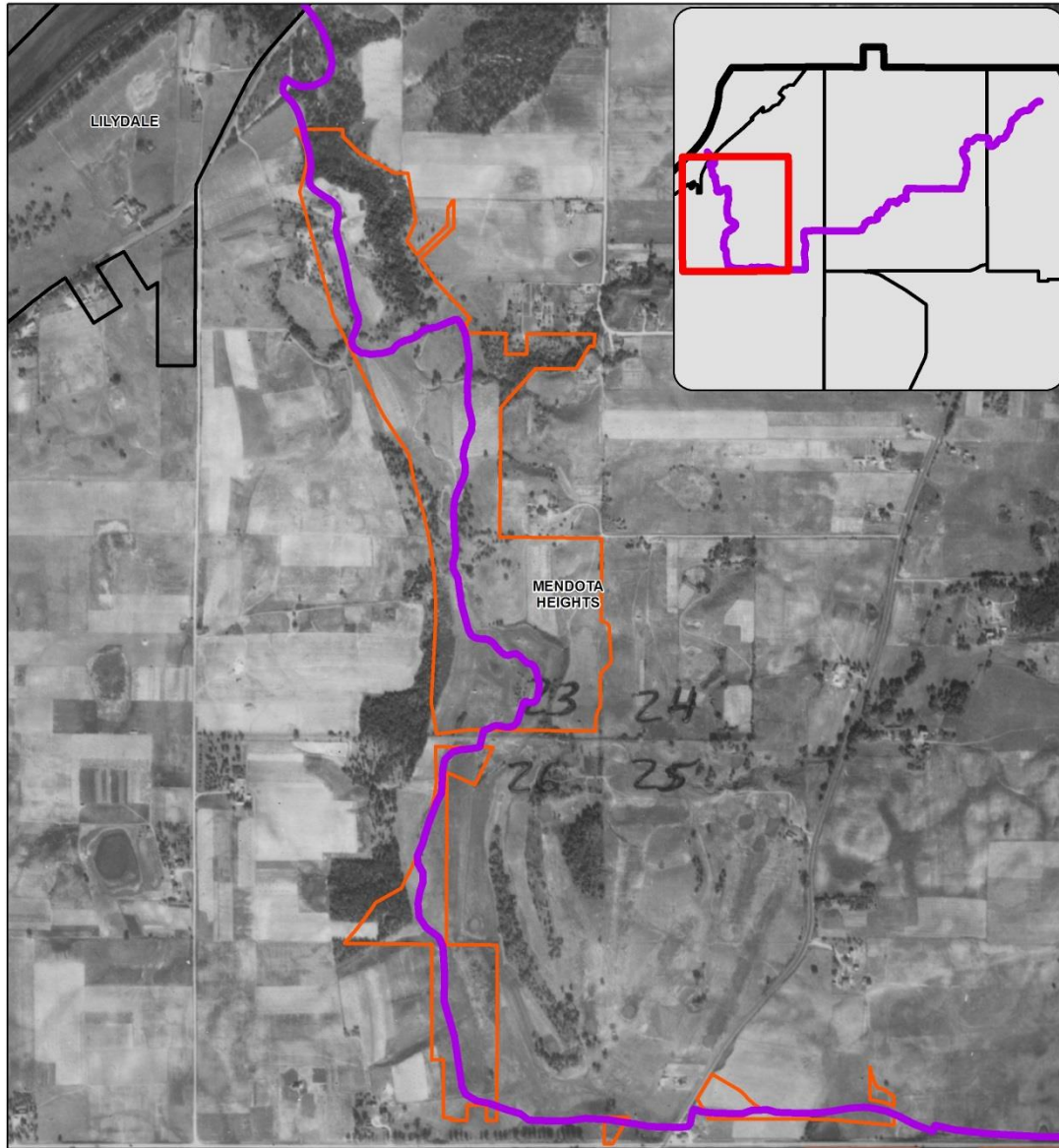


# Soils





**Figure 4 - 1937 Historic Aerial Photograph  
Valley Park, Mendota Heights (West, Map 1)**



— RiverTo RiverGreenway  
— NRMP Area Outline

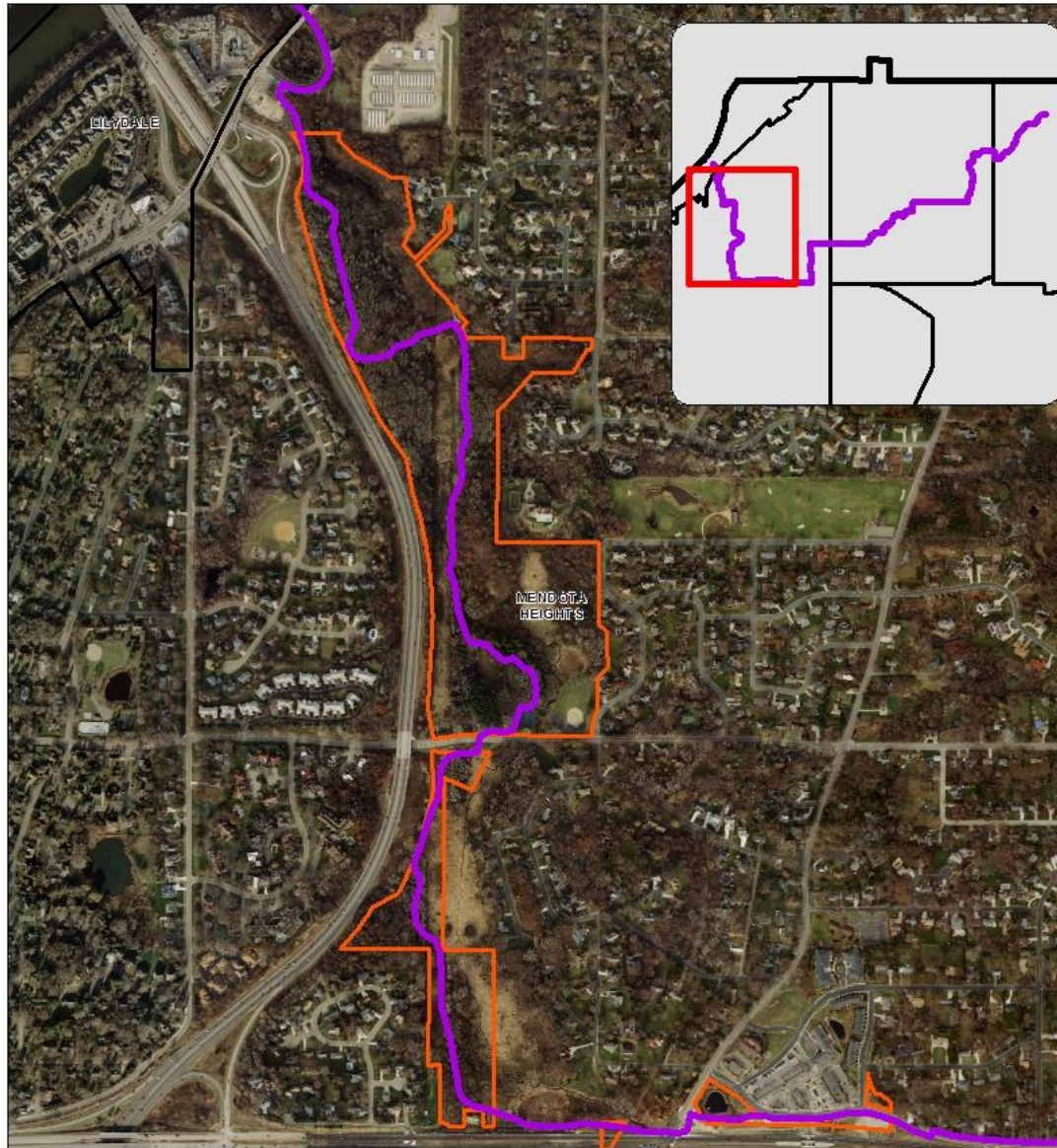
Scale  
**1:10,000**  
0 0.075 0.15 0.3  
Miles



*Dakota*  
COUNTY  
forever wild  
PARKS



**Figure 6 - Current Aerial Photograph  
Valley Park, Mendota Heights (West, Map 1)**



— RiverTo RiverGreenway  
— NRMP Area Outline

Scale  
1:10,000  
0 0.075 0.15 0.3 Miles

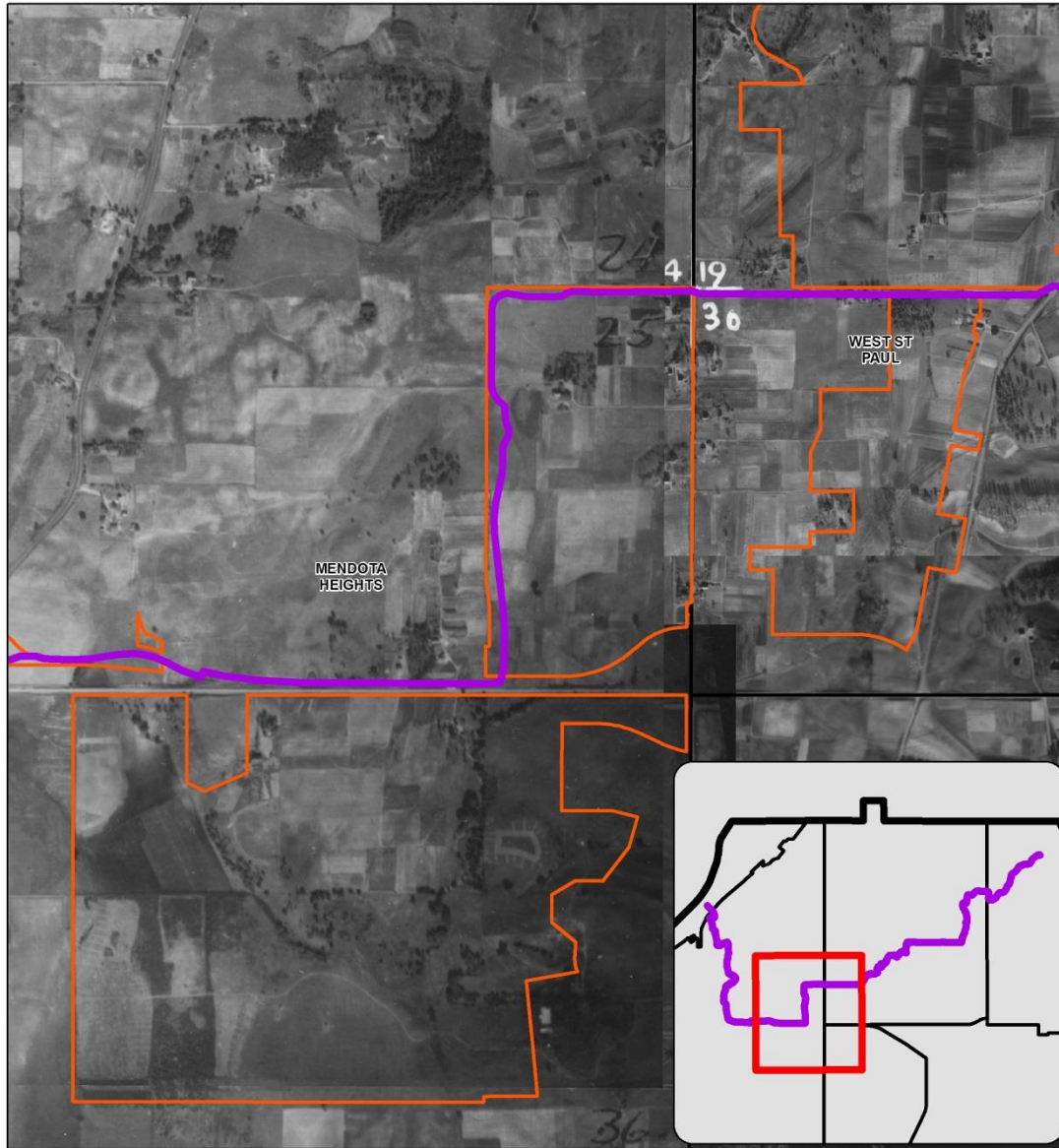


*Dakota*  
forever wild  
PARKS



# Valley Park

**Figure 4 - 1937 Historic Aerial Photograph  
Dodge, Mendota Heights / West St. Paul (Map 2)**



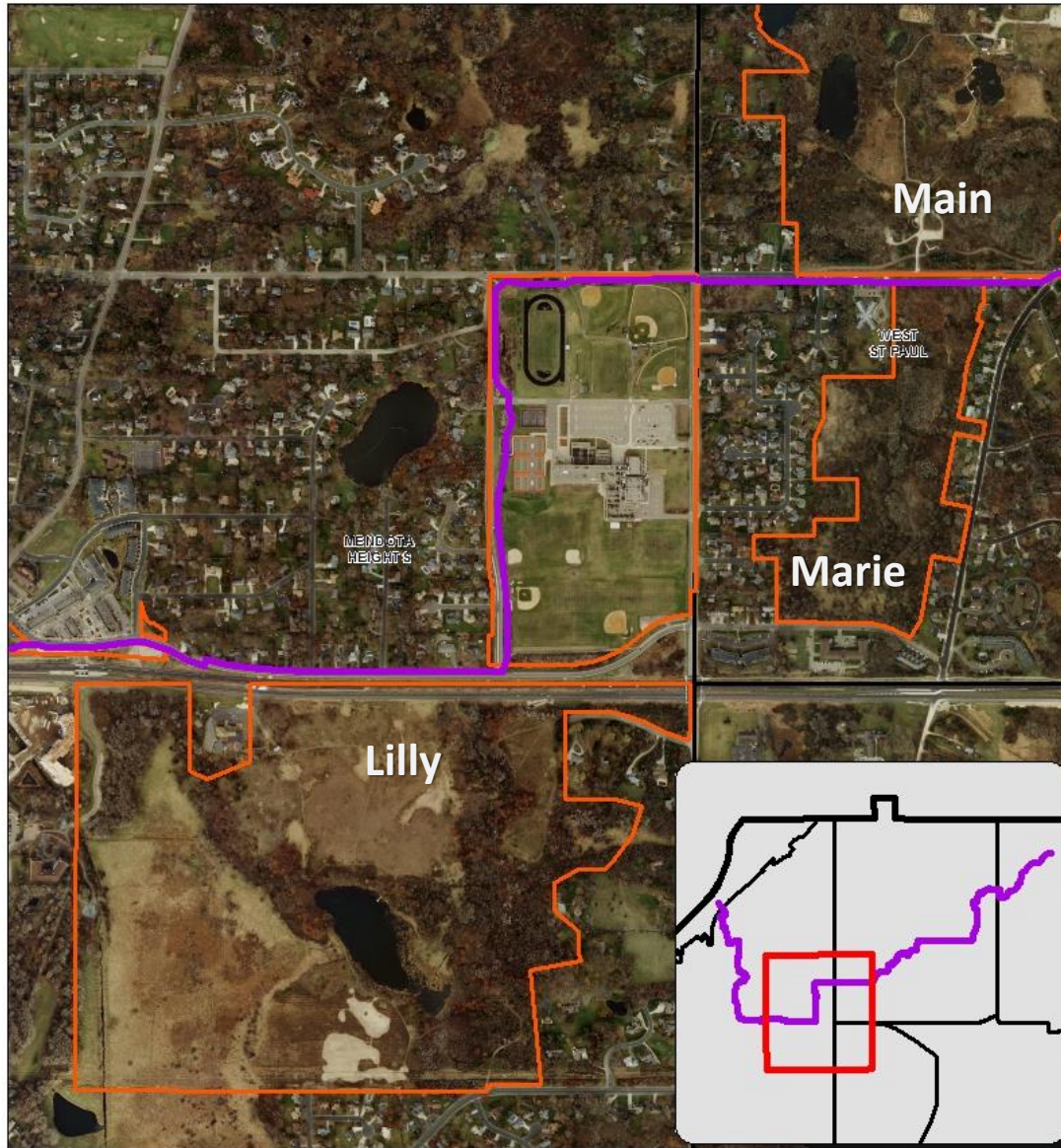
— RiverTo RiverGreenway  
— NRMP Area Outline

Scale  
**1:10,000**  
0 0.075 0.15 0.3 Miles



*Dakota*  
COUNTY  
forever wild  
PARKS

**Figure 6 - Current Aerial Photograph**  
**Dodge, Mendota Heights/ West St. Paul (Map 2)**



— RiverTo RiverGreenway  
— NRMP Area Outline

Scale  
**1:10,000**  
0 0.075 0.15 0.3 Miles



*Dakota*  
forever wild  
PARKS



# Dodge Nature Center Wetlands and Altered Forest

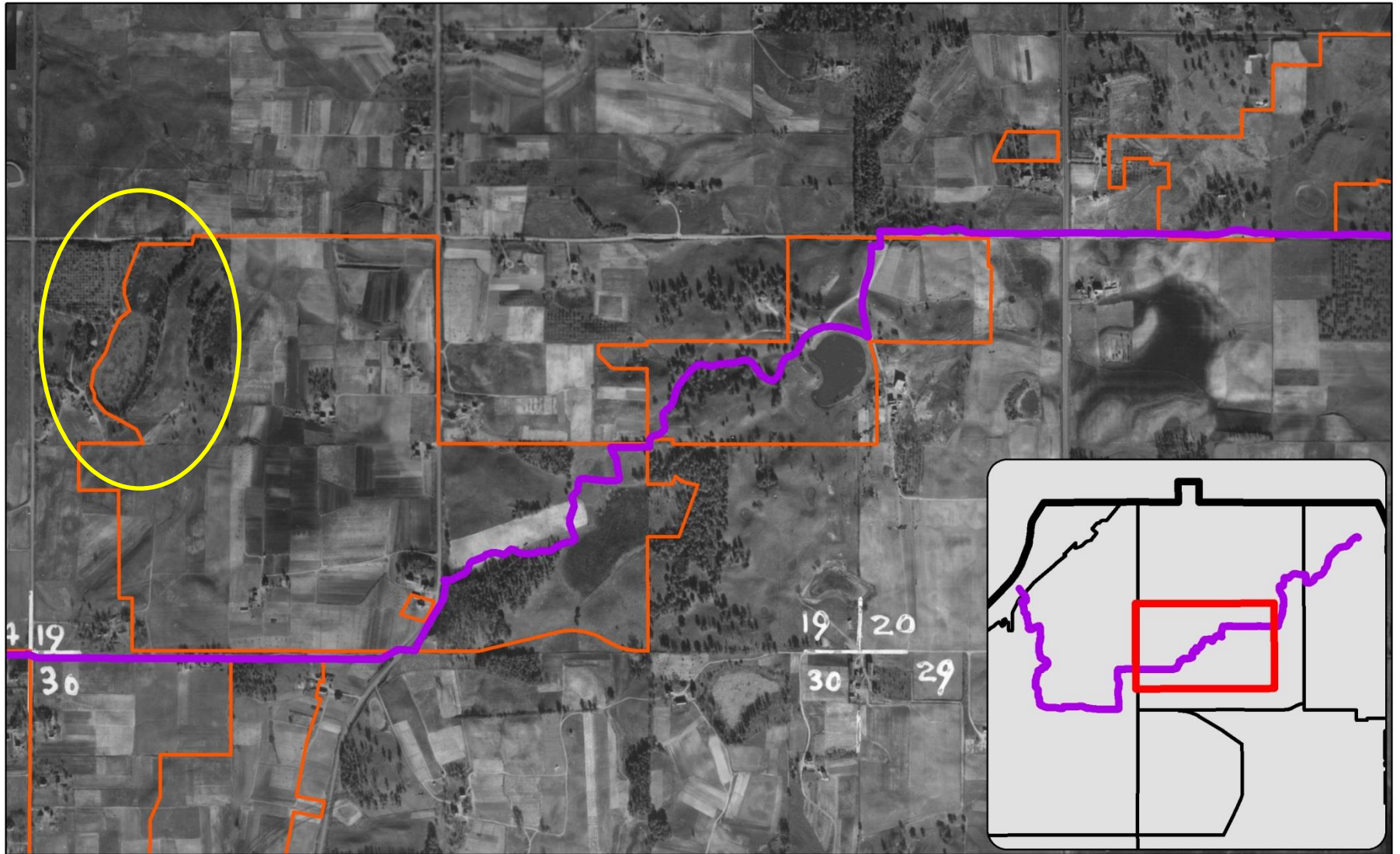


**Dodge**

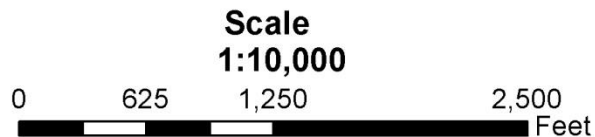
**Oak Woodlands**



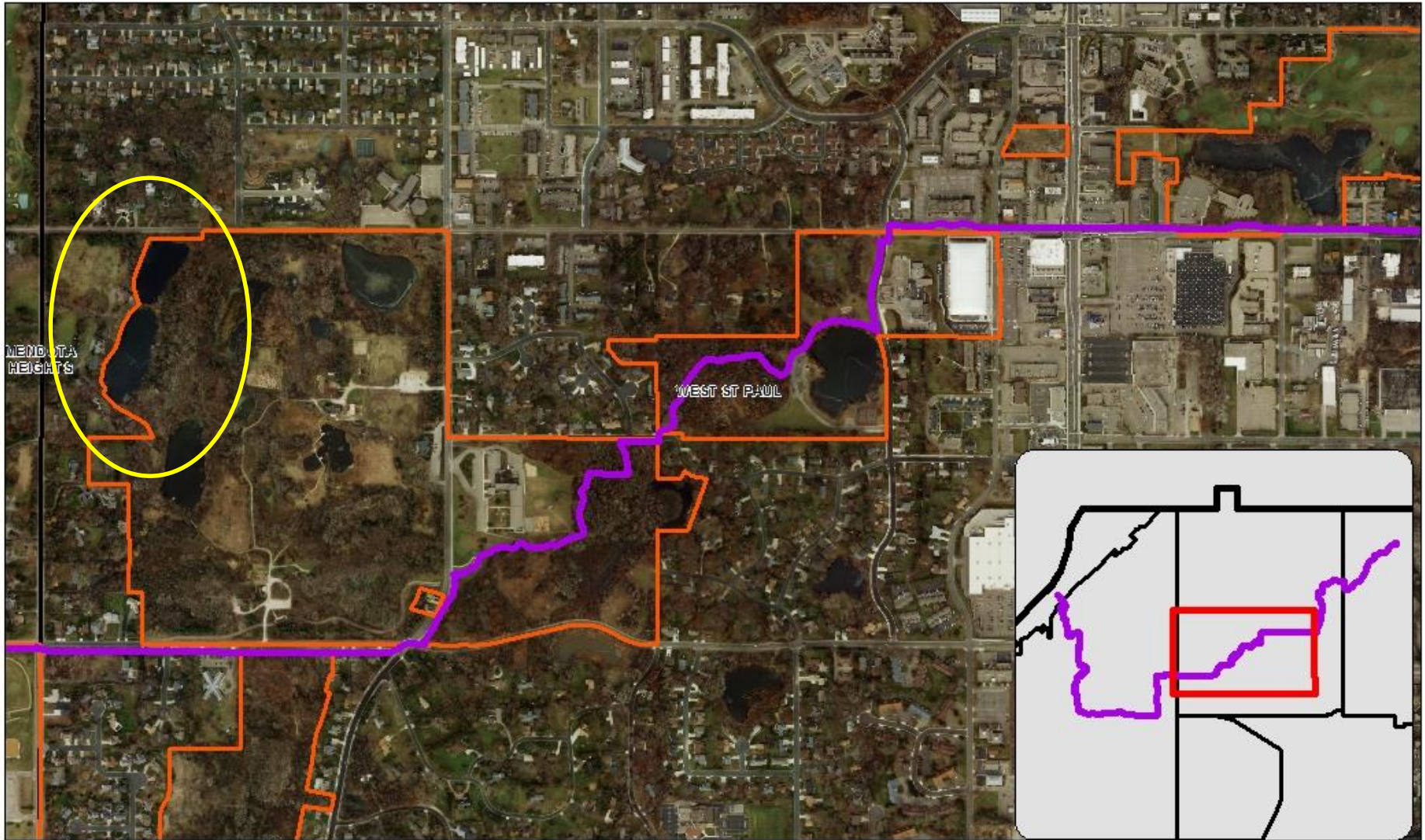
**Figure 4 - Historic 1937 Aerial Photograph  
Dodge, Garlough & Marthaler Parks, West Saint Paul (Map 3)**





 RiverTo River Greenway  
 NRMP Area Outline

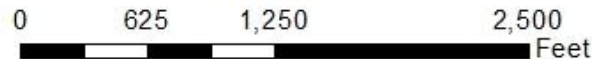


**Figure 6 - Current Aerial Photograph  
Dodge, Garlough & Marthaler Parks, West St. Paul (Map 3)**



-  RiverTo RiverGreenway
-  NRMP Area Outline

Scale  
1:10,000

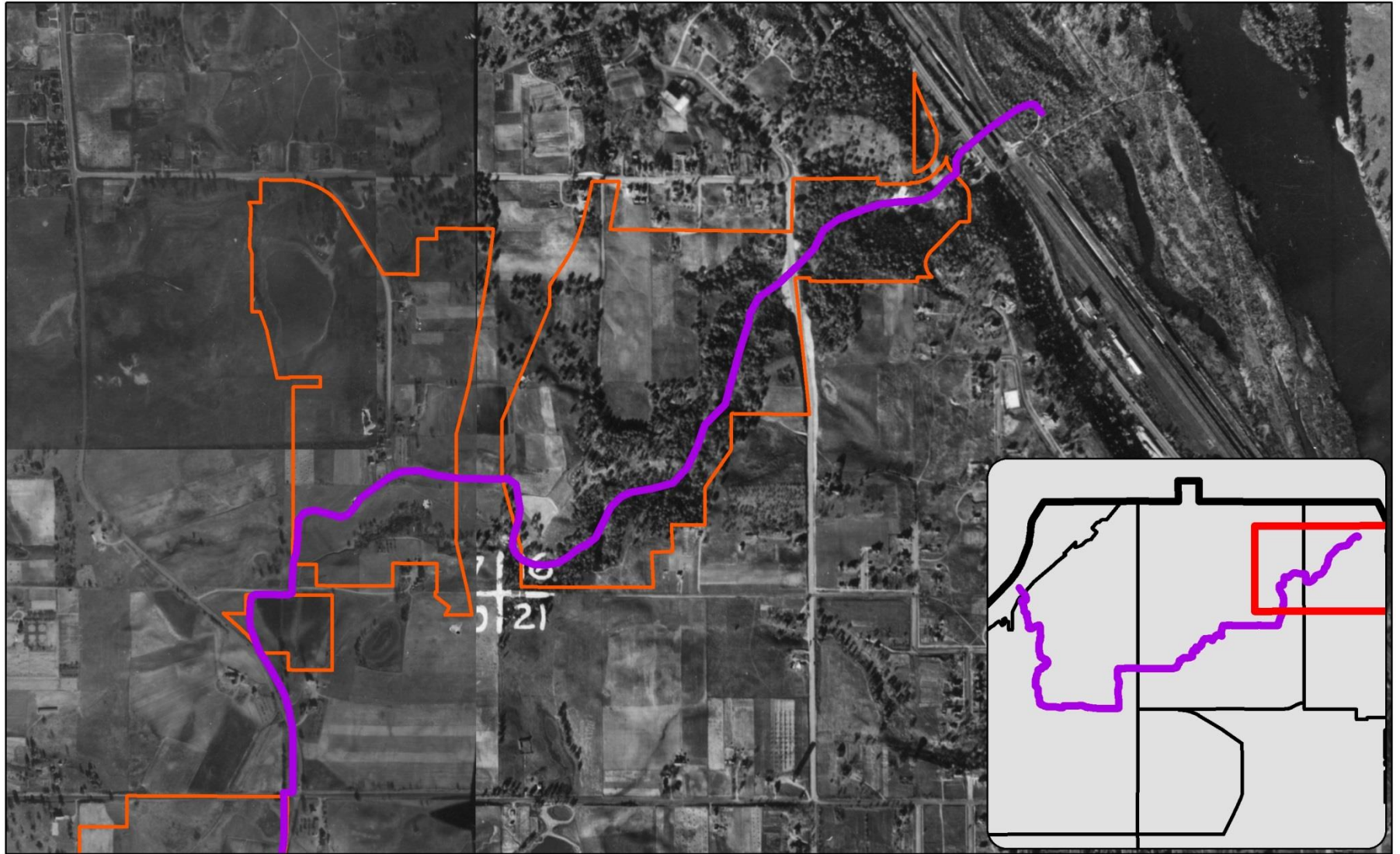




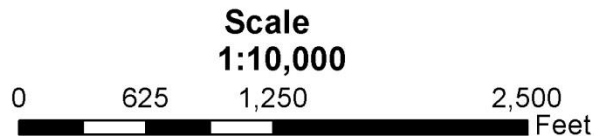


# Garlough Park

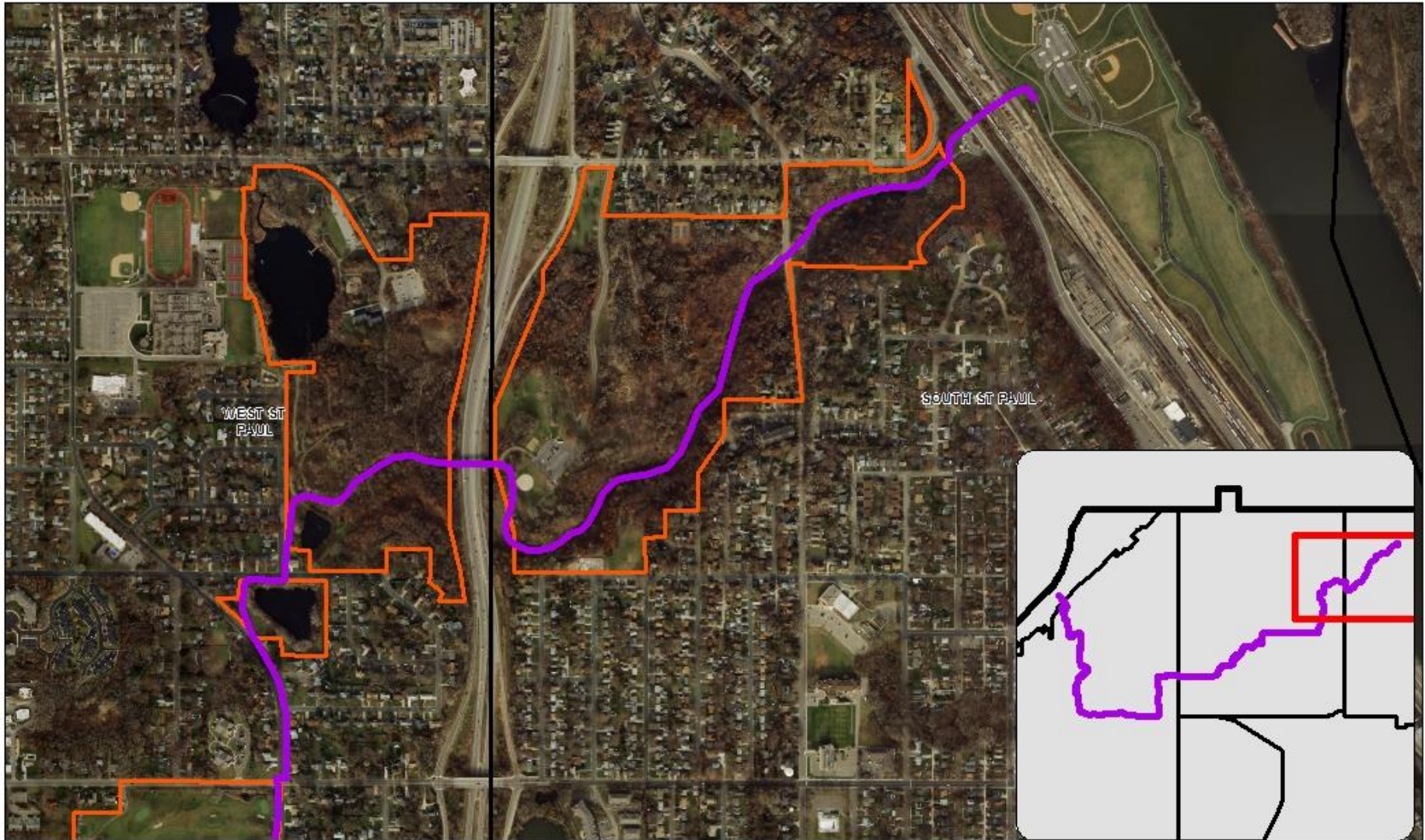
**Figure 4 - Historic 1937 Aerial Photograph  
Thompson County Park, Kaposia Park, West and South Saint Paul (Map 4)**



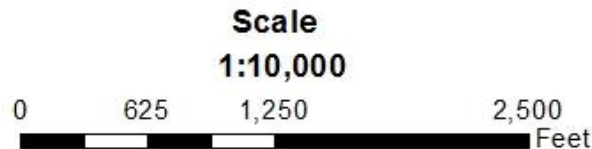
 RiverTo River Greenway  
 NRMP Area Outline



**Figure 6 - Current Aerial Photograph**  
**Thompson County Park, Kaposia Park, West and South Saint Paul (Map 4)**



— RiverTo RiverGreenway  
— NRMP Area Outline



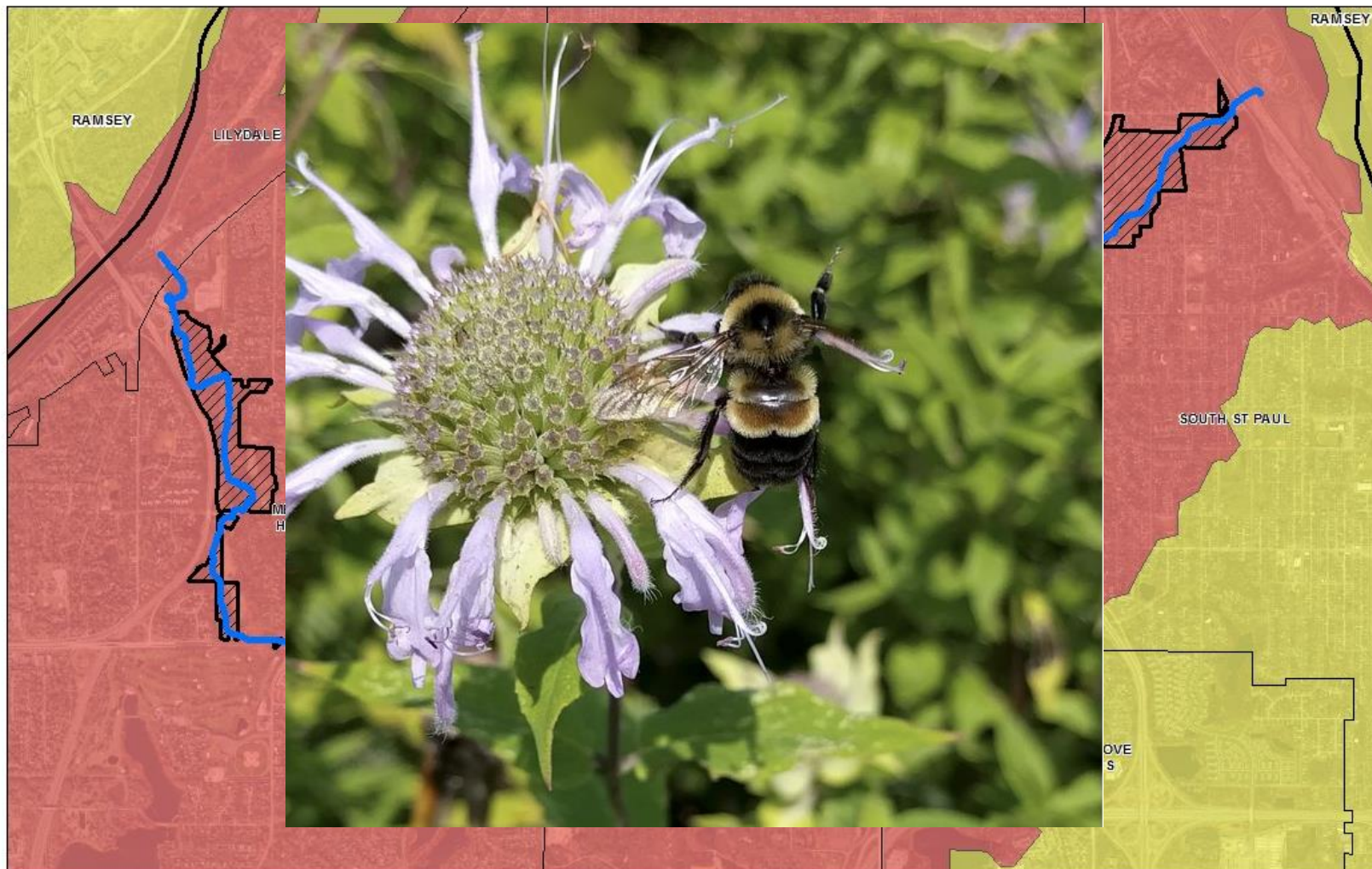


**Simon's Ravine**

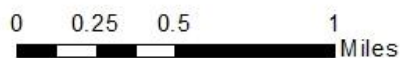
**Southern Mesic  
Oak-Basswood Forest  
MHs38c**

Taxon	Scientific Name	Common Name	State Status	Federal Status	Last Observed
Amphibian	<i>Necturus maculosus</i>	Mudpuppy	SPC		2016
Fish	<i>Cycleptus elongatus</i>	Blue Sucker	SPC		2012
Fish	<i>Ictiobus niger</i>	Black Buffalo	THR		2010
Fish	<i>Notropis anogenus</i>	Pugnose Shiner	THR		1890
Fish	<i>Polyodon spathula</i>	Paddlefish	THR		2012
Insect	<i>Bombus affinis</i>	Rusty Patched Bumblebee		END	2018
Mussel	<i>Actinonaias ligamentina</i>	Mucket	THR		1905
Mussel	<i>Arcidens confragosus</i>	Rock Pocketbook	END		2005
Mussel	<i>Cyclonaias tuberculata</i>	Purple Wartback	END		2001
Mussel	<i>Ellipsaria lineolata</i>	Butterfly	THR		2005
Mussel	<i>Elliptio crassidens</i>	Elephant-ear	END		2007
Mussel	<i>Euryntia dilatata</i>	Spike	THR		2000
Mussel	<i>Ligumia recta</i>	Black Sandshell	SPC		2007
Mussel	<i>Obovaria olivaria</i>	Hickorynut	delisted 2013		2004
Mussel	<i>Plethobasus cyphus</i>	Sheepnose	END	END	2001
Mussel	<i>Pleurobema sintoxia</i>	Round Pigtoe	SPC		2001
Mussel	<i>Quadrula fragosa</i>	Winged Mapleleaf	END	END	2001
Mussel	<i>Quadrula nodulata</i>	Wartyback	THR		2011
Mussel	<i>Reginaia ebenus</i>	Ebonyshell	END		2001
Mussel	<i>Theliderma metanevra</i>	Monkeyface	THR		2001
Mussel	<i>Tritogonia verrucosa</i>	Pistolgrip	END		2003
Mussel	<i>Truncilla donaciformis</i>	Fawnsfoot	THR		2010
Plant	<i>Juglans cinera</i>	Butternut	END		1884
Reptile	<i>Emydoidea blandingii</i>	Blanding's Turtle	THR		2000

Taxon	Scientific Name	Common Name	State Status	Federal Status	Last Observed
Amphibian	<i>Necturus maculosus</i>	Mudpuppy	SPC		2016
Fish	<i>Cycleptus elongatus</i>	Blue Sucker	SPC		2012
Fish	<i>Ictiobus niger</i>	Black Buffalo	THR		2010
Fish	<i>Notropis anogenus</i>	Pugnose Shiner	THR		1890
Fish	<i>Polyodon spathula</i>	Paddlefish	THR		2012
<b>Insect</b>	<b><i>Bombus affinis</i></b>	<b>Rusty Patched Bumblebee</b>		<b>END</b>	<b>2018</b>
Mussel	<i>Actinonaias ligamentina</i>	Mucket	THR		1905
Mussel	<i>Arcidens confragosus</i>	Rock Pocketbook	END		2005
Mussel	<i>Cyclonaias tuberculata</i>	Purple Wartyback	END		2001
Mussel	<i>Ellipsaria lineolata</i>	Butterfly	THR		2005
Mussel	<i>Elliptio crassidens</i>	Elephant-ear	END		2007
Mussel	<i>Euryntia dilatata</i>	Spike	THR		2000
Mussel	<i>Ligumia recta</i>	Black Sandshell	SPC		2007
Mussel	<i>Obovaria olivaria</i>	Hickorynut	delisted 2013		2004
Mussel	<i>Plethobasus cyphus</i>	Sheepnose	END	END	2001
Mussel	<i>Pleurobema sintoxia</i>	Round Pigtoe	SPC		2001
Mussel	<i>Quadrula fragosa</i>	Winged Mapleleaf	END	END	2001
Mussel	<i>Quadrula nodulata</i>	Wartyback	THR		2011
Mussel	<i>Reginaia ebenus</i>	Ebonyshell	END		2001
Mussel	<i>Theliderma metanevra</i>	Monkeyface	THR		2001
Mussel	<i>Tritogonia verrucosa</i>	Pistolgrip	END		2003
Mussel	<i>Truncilla donaciformis</i>	Fawnsfoot	THR		2010
Plant	<i>Juglans cinera</i>	Butternut	END		1884
<b>Reptile</b>	<b><i>Emydoidea blandingii</i></b>	<b>Blanding's Turtle</b>	<b>THR</b>		<b>2000</b>



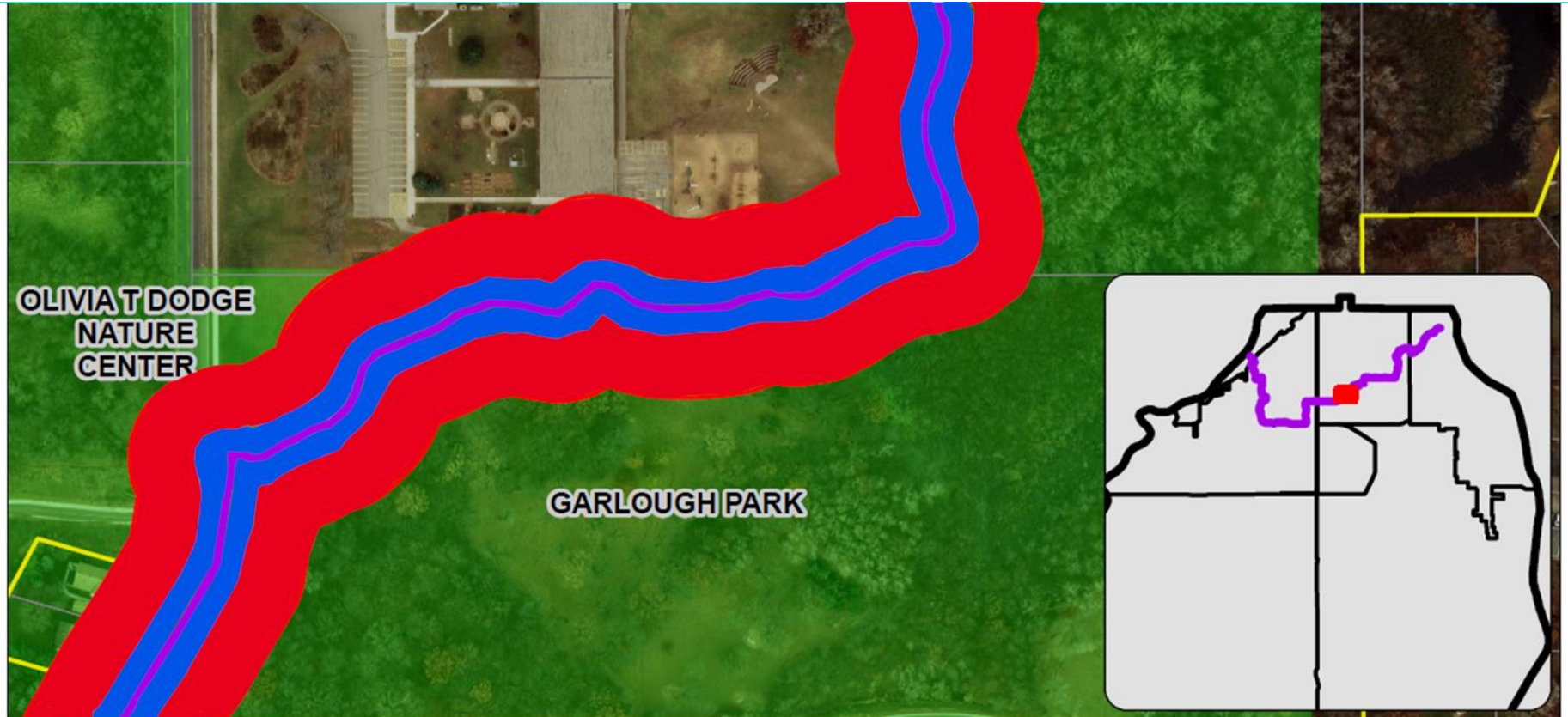
**Scale**  
1:30,000



# Next Steps

## Planning Commission Meeting – Phase II

- Preliminary Recommendations
- Five- and 20-year workplan
- Guidelines for Cost-Share
- Clarification of County Roles



- RiverTo River Greenway
- 30 ft Easement
- 100 ft Urban Greenway Corridor
- NRMP Area Outline
- City Parks

Scale  
1:2,000

